

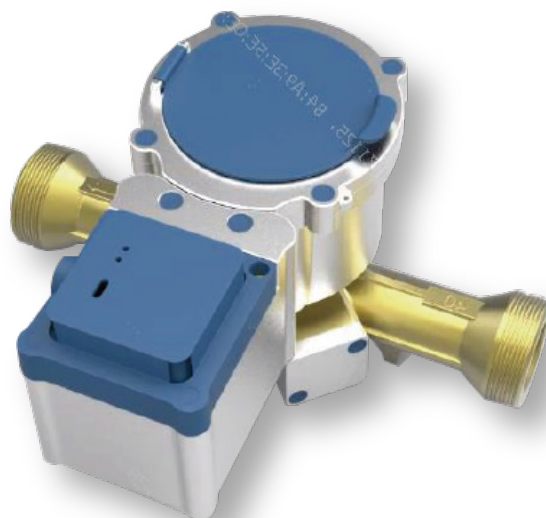
District Ultrasonic Water Meter

ZLINK DISTRICT is a bulk ultrasonic water meter with high accuracy and a wide range of sizes, suitable for water measurement as aggregate meter at the inlet service pipe of apartment and complex.

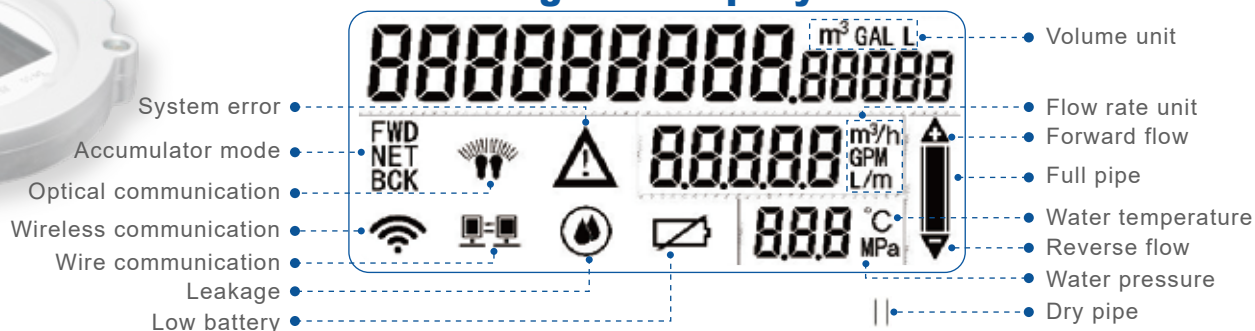
Combining with various IoT technologies, ZLINK DISTRICT helps the operator enhance communication coverage and reduce operational cost, which paves the way towards intelligent water utility and smart city.



- Wide Measurement range of Q3/Q1= R500
- Ultralow starting flow avoids apparent losses
- Bi-directional flow measurement to prevent water tamper
- Friendly big LCD displays cumulative volume, instantaneous flow and rich information of alarms
- No wearing parts, excellent long-term stability and reliability
- Integrated with pressure detection (Optional)
- Vacuuming Electron cavity to prevent glass fogging.
- Battery powered with lifetime of more than 10 years
- Supports a wide range of communication technologies like wireless GPRS, RS485, NB-IoT, etc.
- Protection level: Submersible-IP68
- Leakage detection and dry pipe detection



Digital Display

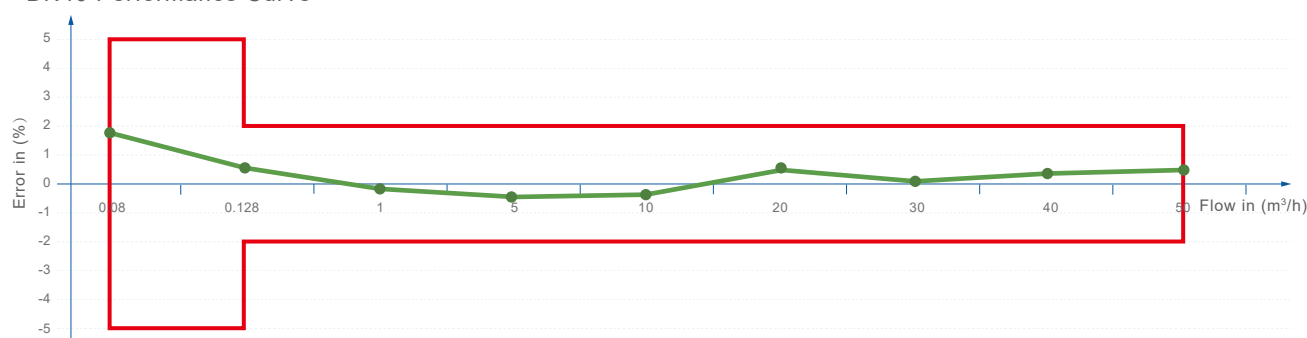


Communication interface

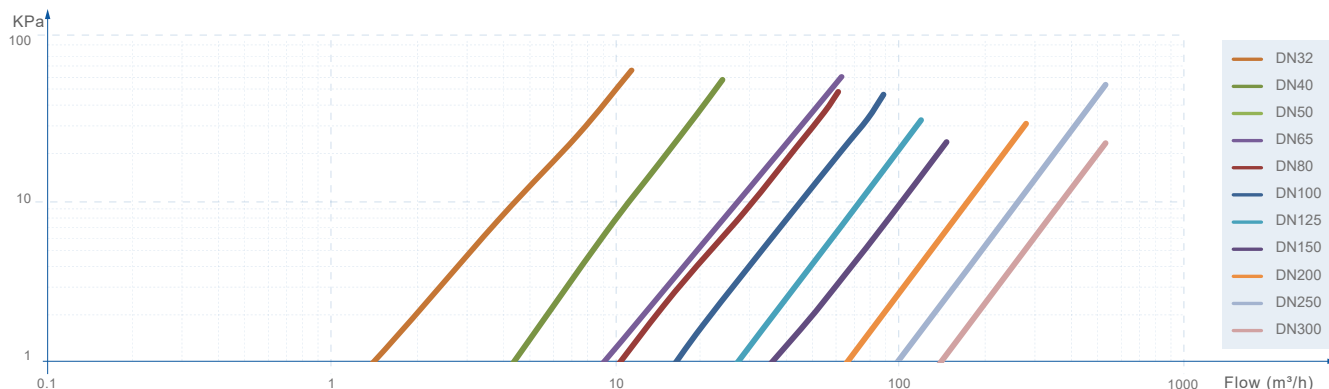
Pulse	Optocoupler high speed pulse, suitable for pulse verification Hall pulse, suitable for the field detection of cumulative volume
4-20mA	4-20mA current loop output corresponding instantaneous flow, The upper limit of flow corresponding to 20mA can be limited
RS485	Low power RS485 communication mode, adopts standard Modbus protocol
M-bus	EN13757 protocol, bus communication
NB-IoT	With narrow band of 180kHz, It can be directly deployed in GSM, UMTS or LTE network to enable smooth upgrade in future
GPRS	2G/3G/4G wireless remote communication, no concentrator is needed for data collection

Typical Error Graph

DN40 Performance Curve



Head Loss Curve



Technical Specification

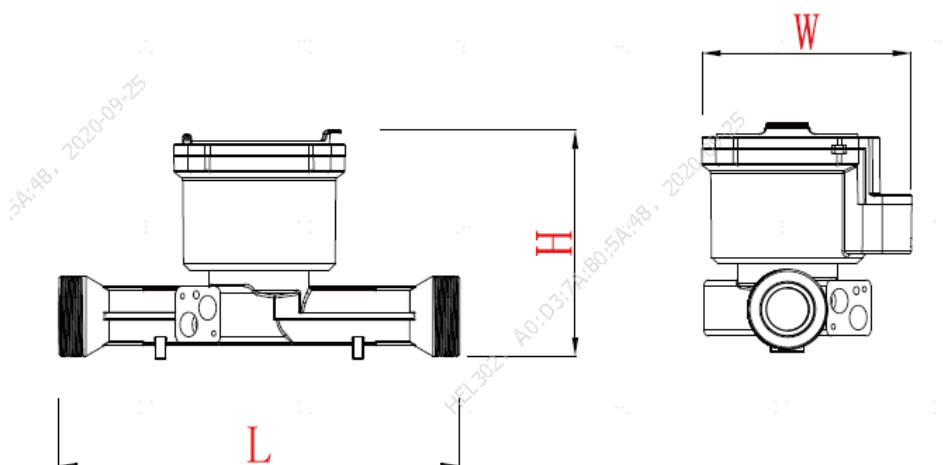
Available Size	DN32-DN40
Standard	ISO4064/EN14154
Q3/Q1=R	500
Precision Class	Class 2
Pressure Loss	Δp_{16}
Maximum Working Pressure	1.6MPa
Resolution of cumulative volume	0.0001~ 999999999.99999 m3
Working Environment	Temperature: -25~55 C , Humidity $\leq 100\%$ (RH)
Liquid Temperature Class	T30/T50
Flow profile sensitivity class	U0D0
Climate and mechanical environment safety level	O
Electromagnetic environment class	E2
Power supply	3.6V lithium batteries, Up to 10 years
Protection class	IP68
Construction	Material: Solid brass Connection: DN32/40 threaded
Data Storage	For errors, alarms and measuring values, data logging capabilities to record up to 14*24 hourly, 366 daily, 72 monthly value.
Communication interfaces	1.M_BUS 2.RS485 3.Pulse 4.NB-IoT 5.4-20mA 6.GPRS

Performance Parameter

Meter Size (mm)	Dynamic	Overload flow rate	Permanent flow rate	Transitional flow rate	Minimum flow rate	Starting flow rate (l/h)
DN (mm)	R	Q4 (m³/h)	Q3 (m³/h)	Q2 (m³/h)	Q1 (m³/h)	Q0 (L/h)
32	500	31.25	25	0.08	0.05	3
40		50	40	0.128	0.08	5

Installation Dimension

Nominal Diameter (mm)	L (mm)	W (mm)	H (mm)	Thread	Weight (kg)
DN32	260	157	155	G11/2B	4.6
DN40	245/300	157	169	G2B	7.2



Global Hexing



13 ●

Regional Headquarters

10 ●

Overseas Subsidiary

5 📍

Overseas Factories

3 ●

Factories in China